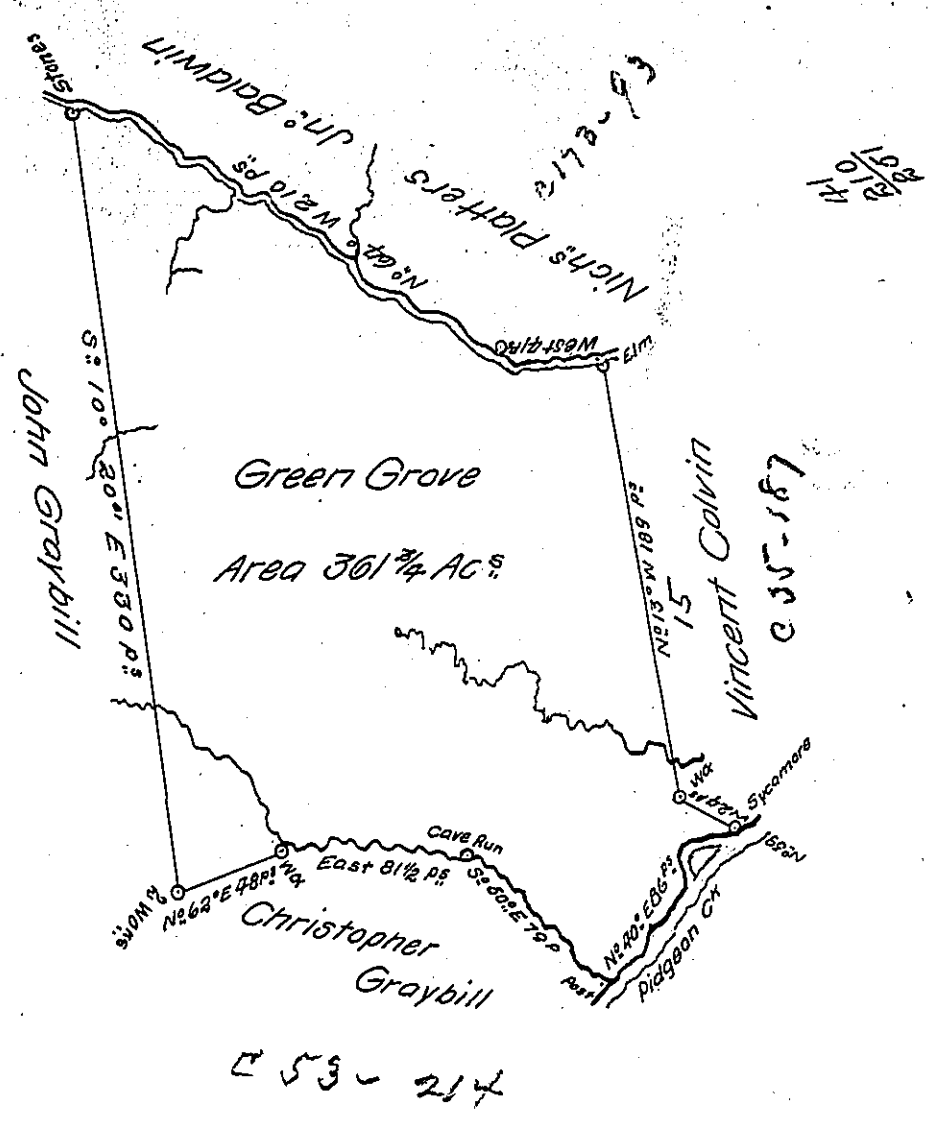


81 1/2
72
160 1/2

66-030



53-214

Ent 8th June 1780

Ret^d 21st March 1787

A draught of a survey called "Green Grove" situate on Pidgeon C^h in Washington County cont^d 361 3/4 Ac^s strict Measure executed Norm^l y^e 30th 1786 for Ab^l Hickman Ass^{ee} of Jos Graybill in Consequence of a Certif^o for 400 Ac^s granted to S^r Graybill by the Commiss^{rs} appointed by Virg^a to adjust the claims to unpatented Lands in the Counties Monong^a Yohg^a and Ohio and duly entered with the County Surv^r as appears from the list of Entries transmitted from the Surveyor Gen^ls Office

Ent 8th June 1780

Presley Nevill

J^{nr} Lukens Esq^r S^r Gen^l

Math^w Ritchie } D S S

IN TESTIMONY that the above is a copy of the original remaining on file in the Department of Internal Affairs of Pennsylvania, made conformably to an Act of Assembly approved the 16th day of February, 1833, I have hereunto set my Hand and caused the Seal of said Department to be affixed at Harrisburg, this twelfth day of January 1905

Isaac P. Benson
Secretary of Internal Affairs